



# BEACON FEN ENERGY PARK

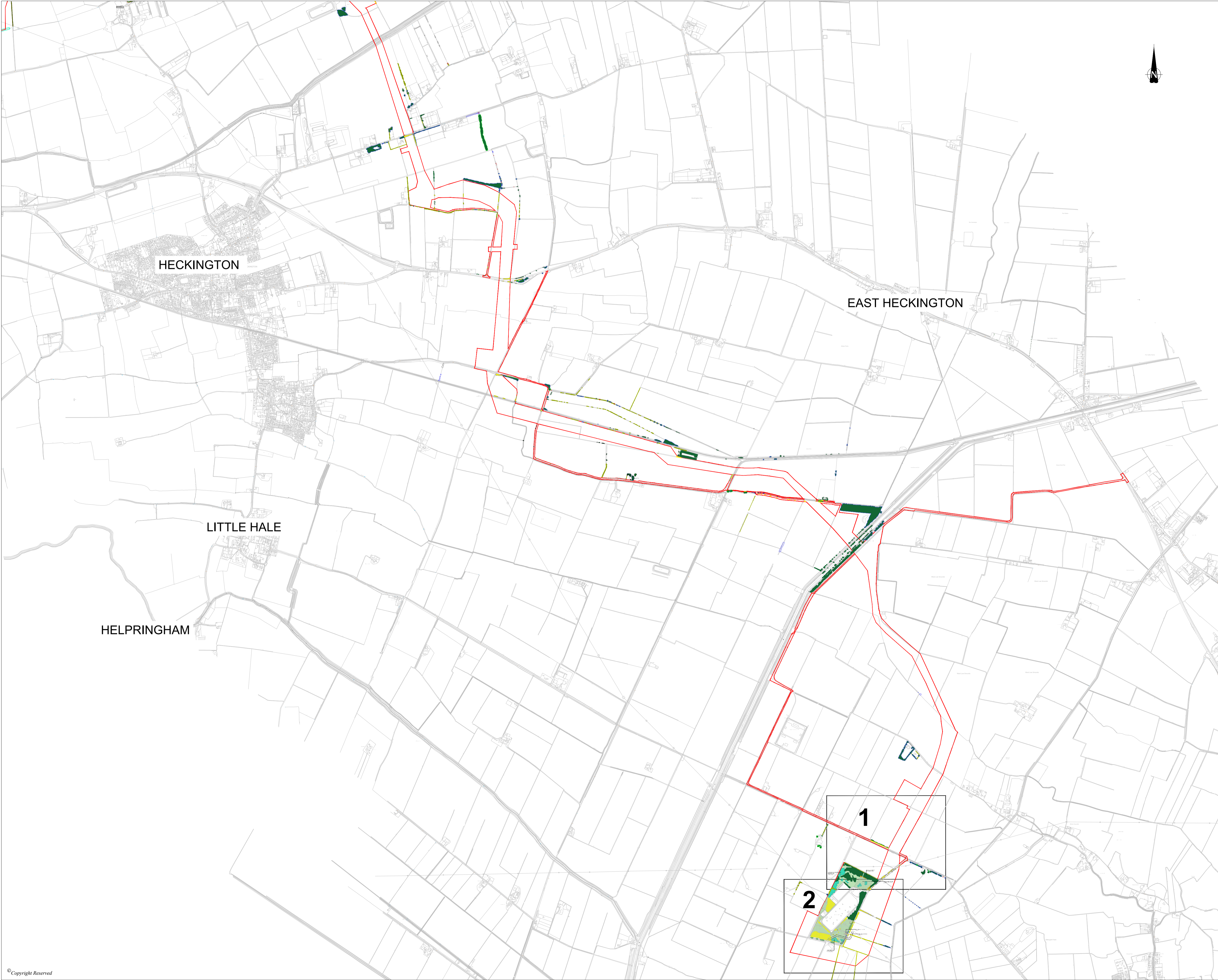
Planning Inspectorate Reference: EN010151

Figure 6.31 Landscape Strategy Plan Part 3 (Change Request)

Document Reference: 6.4. ES Volume 3, 6.4.42c

December 2025





DO NOT SCALE FROM THIS DRAWING


- KEY
- DCO Order Limits
  - Existing vegetation to be potentially removed
  - Existing trees / vegetation
  - Existing Hedgerows to be retained and enhanced
  - Vegetation in highway outside the Applicant's control
  - Vegetation to be potentially temporarily removed and then reinstated
  - Proposed hedgerows
  - Proposed woodland
  - Low scrub and neutral grassland
  - Laid to aggregate / matting for construction and then reinstated with grassland where possible
  - Beacon Fen's indicative Cable Route (30m working width during construction)
  - Indicative highway access point
  - Overhead HV Electricity

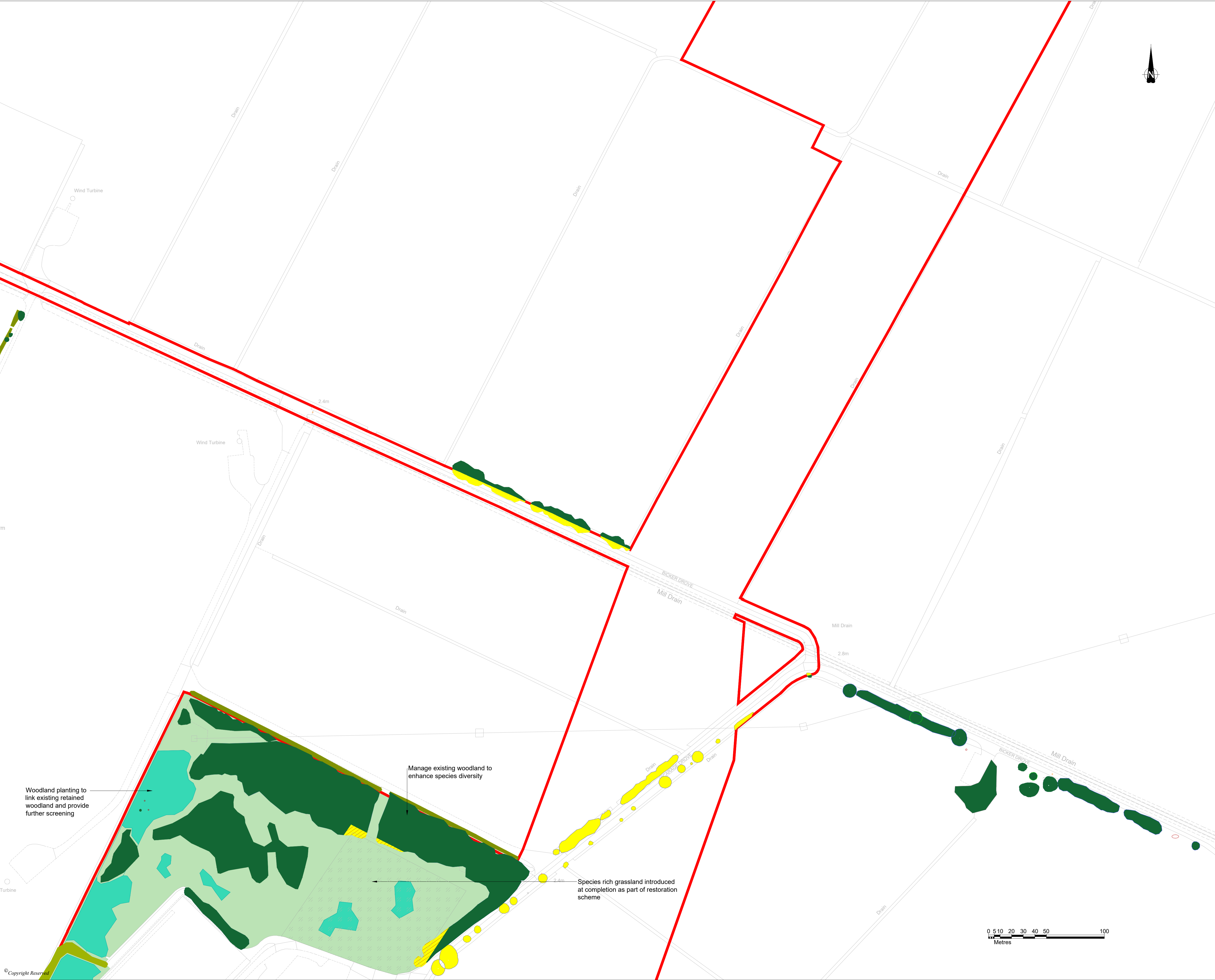
NOTES:

Excluding the DCO order limits, boundaries shown are indicative.

DCO order limits provided by Ardent Management on 04/02/2025.

© Crown Copyright and database rights 2025 Ordnance Survey AC0000808122

4	Revised annotation and aggregate / matting areas for construction added (Bicker Fen Substation)	17-12-25	MAB	DS	DS
3	Revised attributes and sheet numbers	11-12-25	MAB	DS	DS
2	Revised to incorporate enhancement proposals for Bicker Fen Substation	03-12-25	JAW/MAB	DS	DS
REVISION		DATE	DRAWN	CHECKED	APPROVED
CLIENT					
BEACON FEN ENERGY PARK LTD					
PROJECT					
BEACON FEN CABLE ROUTE CORRIDOR					
DRAWING TITLE					
FIGURE 6.31 LANDSCAPE STRATEGY PLAN CABLE ROUTE CORRIDOR OVERVIEW PLAN					
DRG No.	ST19595-082-CRC	REV	4	SUIT. CODE	
DRG SIZE	A1	SCALE	1:150,000	DATE	18/10/2023
DRAWN BY	JC	CHECKED BY	DS	APPROVED BY	DS
 PART OF SLR					



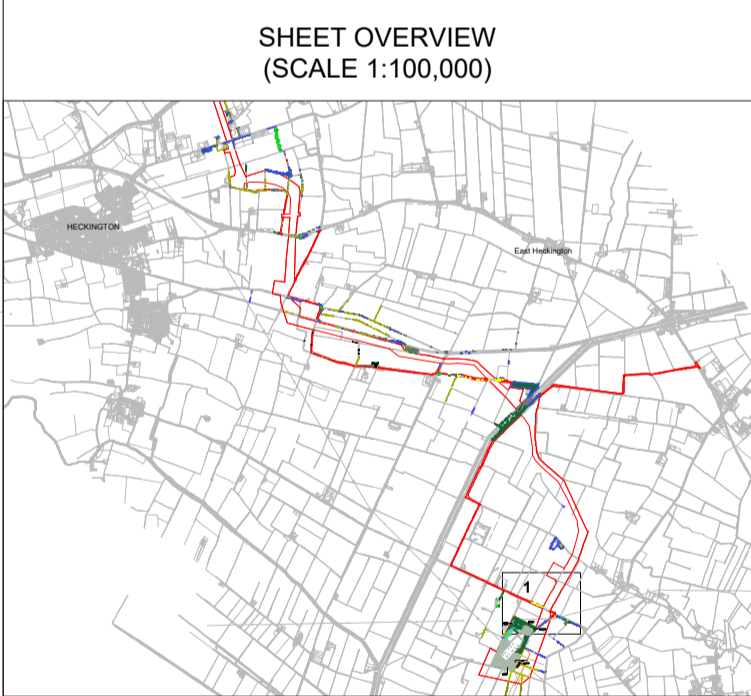
- DO NOT SCALE FROM THIS DRAWING
- KEY
- DCO Order Limits
  - Existing vegetation to be potentially removed
  - Existing trees / vegetation
  - Existing Hedgerows to be retained and enhanced
  - Vegetation in highway outside the Applicant's control
  - Vegetation to be potentially temporarily removed and then reinstated
  - Proposed hedgerows
  - Proposed woodland
  - Low scrub and neutral grassland
  - Laid to aggregate / matting for construction and then reinstated with grassland where possible
  - Beacon Fen's indicative Cable Route (30m working width during construction)
  - Indicative highway access point
  - Overhead HV Electricity

NOTES:

Excluding the DCO order limits, boundaries shown are indicative.

DCO order limits provided by Ardent Management on 04/02/2025.

© Crown Copyright and database rights 2025 Ordnance Survey AC0000808122



4	Revised annotation and aggregate / matting areas for construction added (Bicker Fen Substation)	17.12.25	MAB	DS	DS
3	Revised attributes and sheet numbers	11.12.25	MAB	DS	DS
2	Revised to incorporate enhancement proposals for Bicker Fen Substation	03.12.25	WYAM	DS	DS

REVISION	DETAILS	DATE	DRAWN	CHECKED	APPROVED
----------	---------	------	-------	---------	----------

CLIENT

BEACON FEN ENERGY PARK LTD

PROJECT

BEACON FEN ENERGY PARK

DRAWING TITLE

FIGURE 6.31  
LANDSCAPE STRATEGY PLAN  
CABLE ROUTE CORRIDOR (Sheet 1 of 2)

DRG No.	ST19595-082-CRC	REV	4	SUIT. CODE	
DRG SIZE	A1	SCALE	1:1500	DATE	18/10/2023
DRAWN BY	JC	CHECKED BY	DS	APPROVED BY	SR





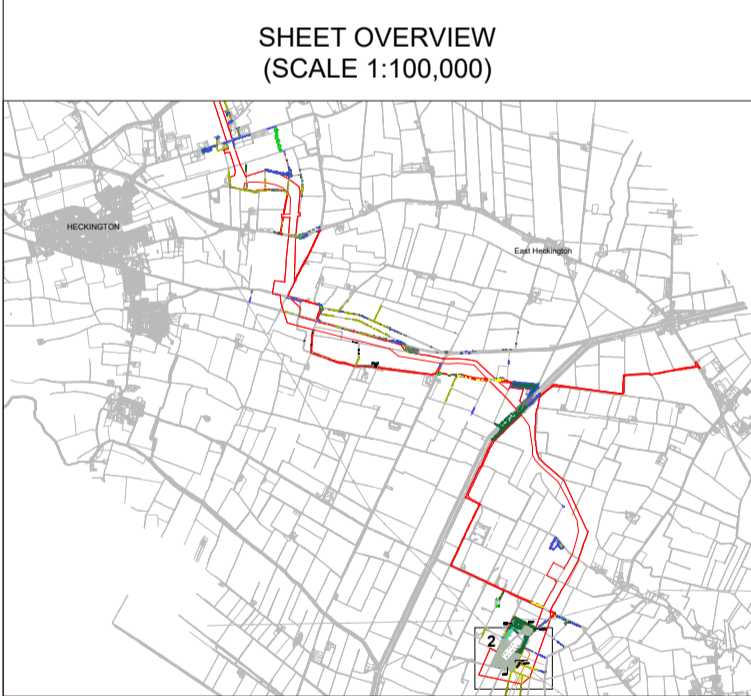
- DO NOT SCALE FROM THIS DRAWING
- KEY
- DCO Order Limits
  - Existing vegetation to be potentially removed
  - Existing trees / vegetation
  - Existing Hedgerows to be retained and enhanced
  - Vegetation in highway outside the Applicant's control
  - Vegetation to be potentially temporarily removed and then reinstated
  - Proposed hedgerows
  - Proposed woodland
  - Low scrub and neutral grassland
  - Laid to aggregate / matting for construction and then reinstated with grassland where possible
  - Beacon Fen's indicative Cable Route (30m working width during construction)
  - Indicative highway access point
  - Overhead HV Electricity

NOTES:

Excluding the DCO order limits, boundaries shown are indicative.

DCO order limits provided by Ardent Management on 04/02/2025.

© Crown Copyright and database rights 2025 Ordnance Survey AC0000808122



4	Revised annotation and aggregate / matting areas for construction added (Bicker Fen Substation)	17.12.25	MAB	DS	DS
3	Revised attributes and sheet numbers	11.12.25	MAB	DS	DS
2	Revised to incorporate enhancement proposals for Bicker Fen Substation	03.12.25	AWMAB	DS	DS

REVISION DETAILS DATE DRAWN CHECKD APPD

CLIENT

BEACON FEN ENERGY PARK LTD

PROJECT

BEACON FEN ENERGY PARK

DRAWING TITLE

FIGURE 6.31  
LANDSCAPE STRATEGY PLAN  
CABLE ROUTE CORRIDOR (Sheet 2 of 2)

DRG No.	ST19595-082-CRC	REV	4	SUIT. CODE	
DRG SIZE	A1	SCALE	1:1500	DATE	18/10/2023
DRAWN BY	JC	CHECKED BY	DS	APPROVED BY	SR

